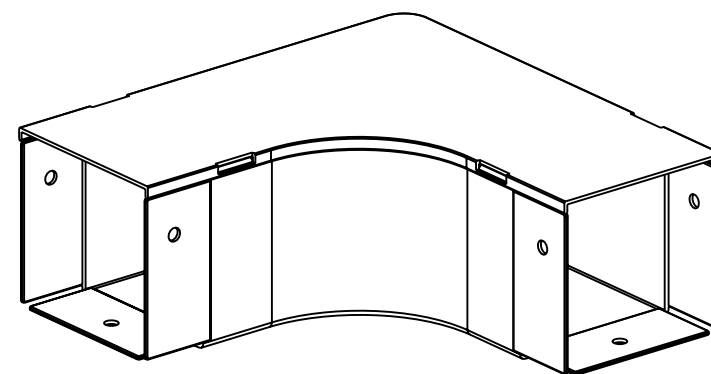
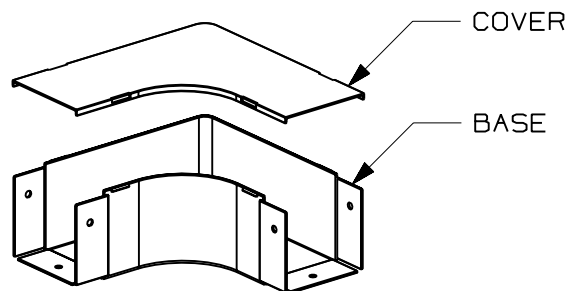


PANDUIT PART NUMBER	WEIGHT
FRA4X4	1.10 LB/EACH (500g/EACH)



NOTES:

1. SEE CURRENT CATALOG FOR ADDITIONAL PART SUFFIXES TO INDICATE COLOR AND/OR PACKAGE QUANTITY.
2. THE FIBER-DUCT 4x4 HORIZONTAL RIGHT ANGLE FITTING IS DESIGNED WITH A MINIMUM 2" (50.8) BEND RADIUS TO PROTECT FIBER OPTIC CABLES.
3. DIMENSIONS IN PARENTHESES ARE IN METRIC.



ENG. REF.: D35245CE_DC_FRA4X4_03.prt

CAD FILENAME/LAYERS

FRA4X4.pdf

PANDUIT CORP TINLEY PARK, ILLINOIS
FIBER-DUCT 4x4 HORIZONTAL RIGHT ANGLE FITTING (FRA4X4)
 CUSTOMER DRAWING

UNLESS OTHERWISE SPECIFIED, DIMENSIONAL TOLERANCES ARE:

(.X) ± (.XXX) ±
 (.XX) ± .03 (.8) ANGLES ±

UNLESS OTHERWISE SPECIFIED, ALL DIMENSIONS ARE GIVEN IN INCHES, THIRD ANGLE PROJECTION.

DRAWN BY JBA

MAT'L:

DATE 4-2-97

ABS

SCALE NONE

DRAWING NO.

35245-31

DWG

A

CHK'D CEF



SIZE

REV	DATE	BY	CHK	DESCRIPTION	ECN	R	CUST	SUP	GMBH
-	-----	---	--	J. REVISED GENERAL NOTES. I. REVISED PART WEIGHT.	-----	--	--		
-	-----	---	--	H. REVISED MATERIAL. G. REVISED DRAWING TITLE.	-----	--	--		
3	12-28-06	MSO	RN	F. REVISED CAD FILENAME. E. REVISED AND REDRAWN.	35245-31	RN	RN		